

## Rab13

**Catalog Number:** 21046

**Gene Symbol:** RAB13

**Description:** Anti-Rab13 Rabbit Polyclonal Antibody

**Background:** Rab GTPases are Ras-like small molecular weight GTP-binding proteins that are involved in various steps along the exocytic and endocytic pathways. Rab13 plays a critical role in regulating both the structure and function of tight junctions in polarized epithelial cells.

**Immunogen:** A synthetic peptide from the internal region of human Rab13 protein

**Tested Applications:** ELISA, WB, IHC, IP

**Recommended Dilutions:**

ELISA	1:100-1:5000
WB	1:100-1:1000
IHC	1:10-1:500

**Concentration:** 0.2 mg/ml

**Host:** Rabbit

**Clonality:** Polyclonal

**Purity:** Purified from serum

**Format:** Liquid

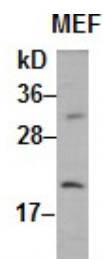
**Preservative:** No

**Constituents:** PBS (without Mg<sup>2+</sup> and Ca<sup>2+</sup>), pH7.4, 150 mM NaCl and 50% glycerol

**Species Reactivity:** Rab13 antibody recognizes Rab13 proteins from vertebrates.

**Storage Conditions:** Store at -20°C. Avoid freeze / thaw cycles

### Western blot:



WB: anti-Rab13 pAb

MEF whole-cell lysate was used for Western blot with anti-Rab13 polyclonal antibody (Cat. # 21046).

FOR RESEARCH USE ONLY. NOT FOR DIAGNOSTIC APPLICATIONS